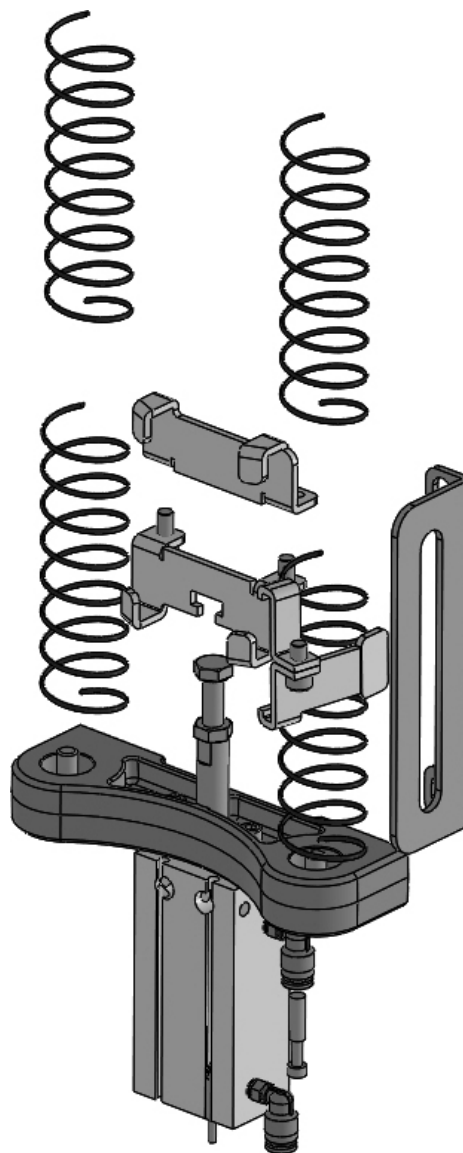


## Type K Dresser Lifter K-LIFTER

### Instruction Manual

To use the K-LIFTER correctly, please read through this instruction manual carefully before use.



# Contents

1. Cautions	_____	2
2. Dimensions	_____	3
3. Specifications	_____	4
4. Parts List	_____	5
5. Method of Disassembly / Reassembly	_____	6
6. How to Install the Sensor	_____	11
7. Precautions for Operation	_____	12
8. Example of Teaching	_____	13
9. Troubleshooting	_____	15
Contact	_____	16





# 1. Cautions

## ■Introduction

The K-LIFTER, to be used on a dresser manufactured by our company (Type K Series), enables grinding using a fixed gun without up/down uneven wear. Incidentally, it cannot be attached to undesignated models of dressers.

Please be notified that we cannot be held responsible for failure/repair/accident/other trouble if used for other purposes than the above.

## ■Symboles

 Warning	Indicates a content that there is an assumable possibility of death or serious injury sustained if mishandled.
 Caution	Indicates a content that there is an assumable possibility of injury sustained or of property damage only if mishandled.
	This symbol indicates operations that should not be done.
	This symbol indicates operation that should be done.

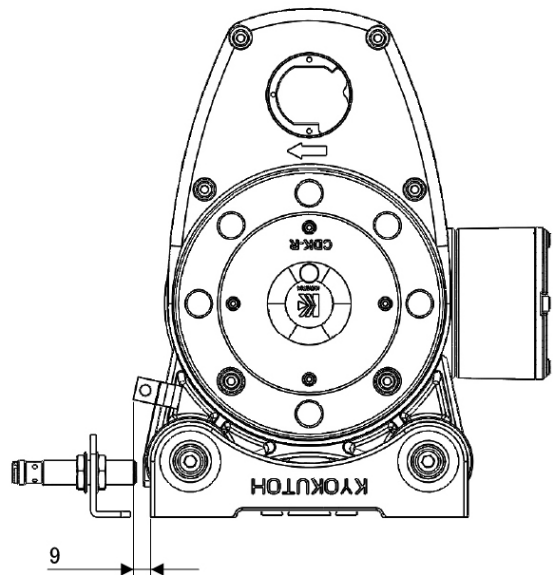
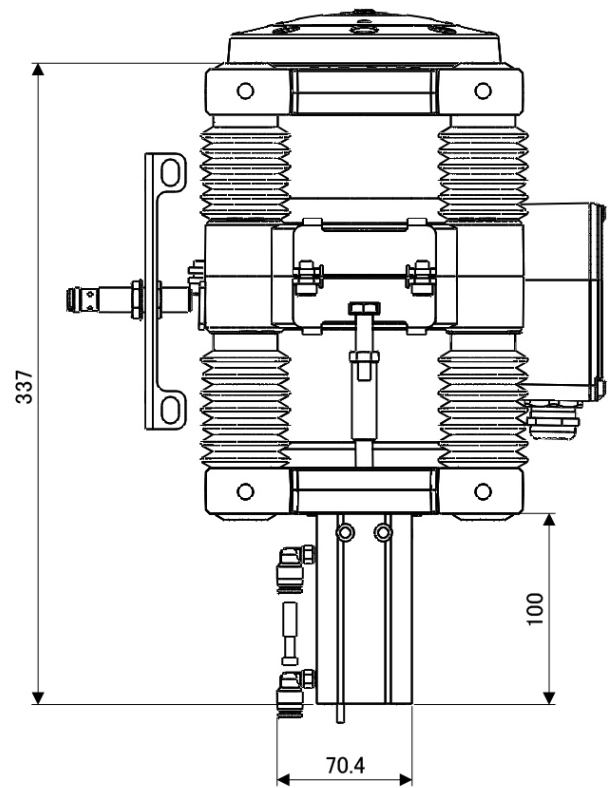
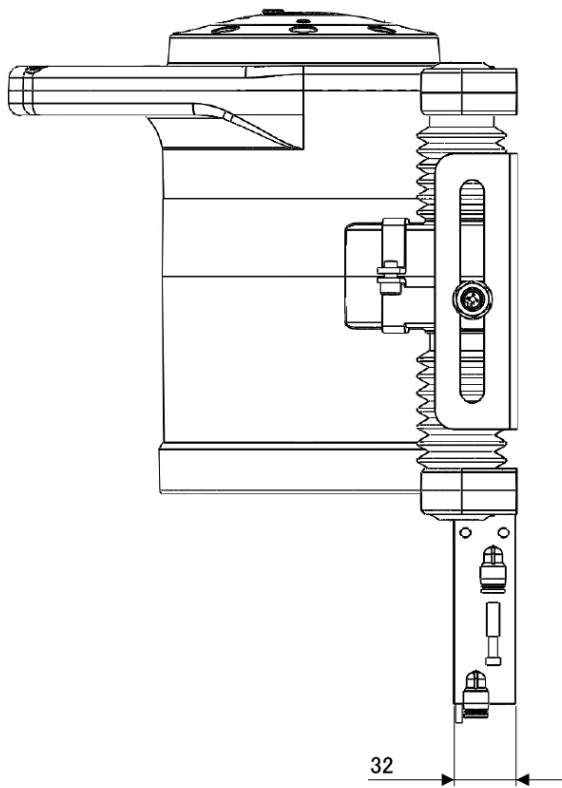
## ■Recommended Air Pressure

Please be sure before installation to check your environment of use.

The recommended air pressure for K-LIFTER action is in the range of 0.5 ~ 0.7 MPa.

Please be careful that trouble results if used beyond the recommended value.

## 2. Dimensions

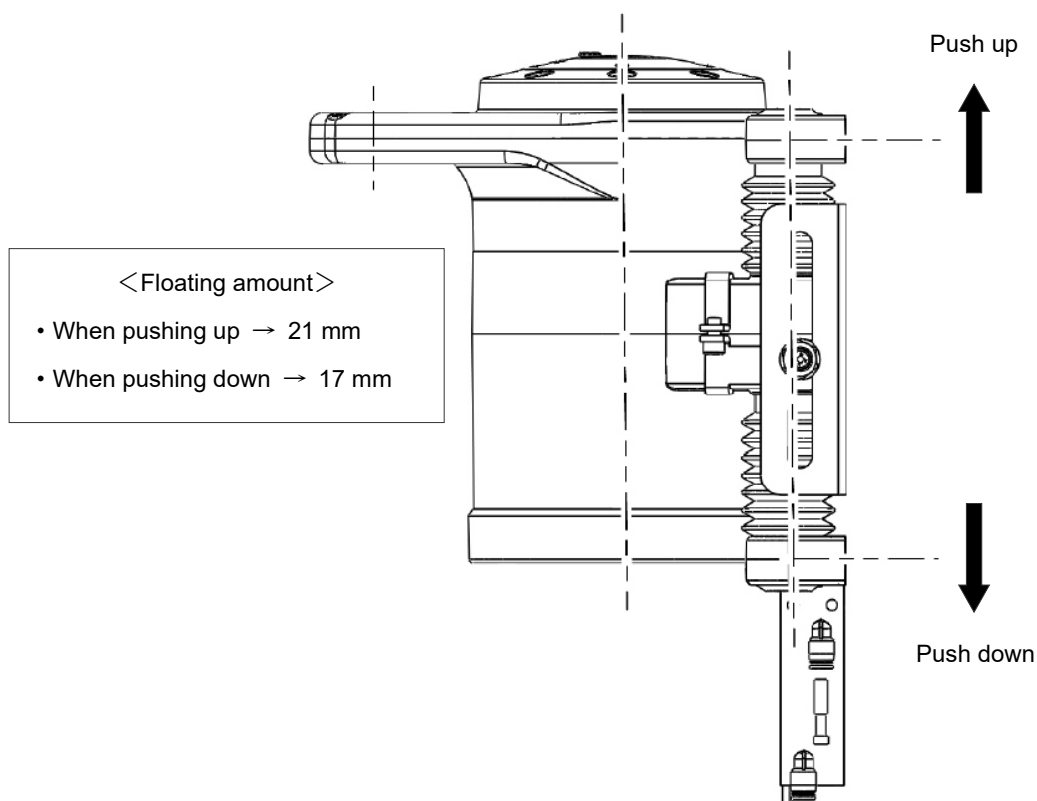


## 3. Specifications

### ■Cylinder Specifications

Item	Remarks
Action	Double
Rod	Single
Bore	25 mm
Stroke	50 mm
Maximum working pressure	0.7 bar.
Absolute maximum rated pressure	1.05 MPa
Cushion	Rubber
Port connection	M5 × 0.8
Size	113 × 32 × 50 mm
Operating range temperature	-10°C ~ 70°C

### ■Floating Amount

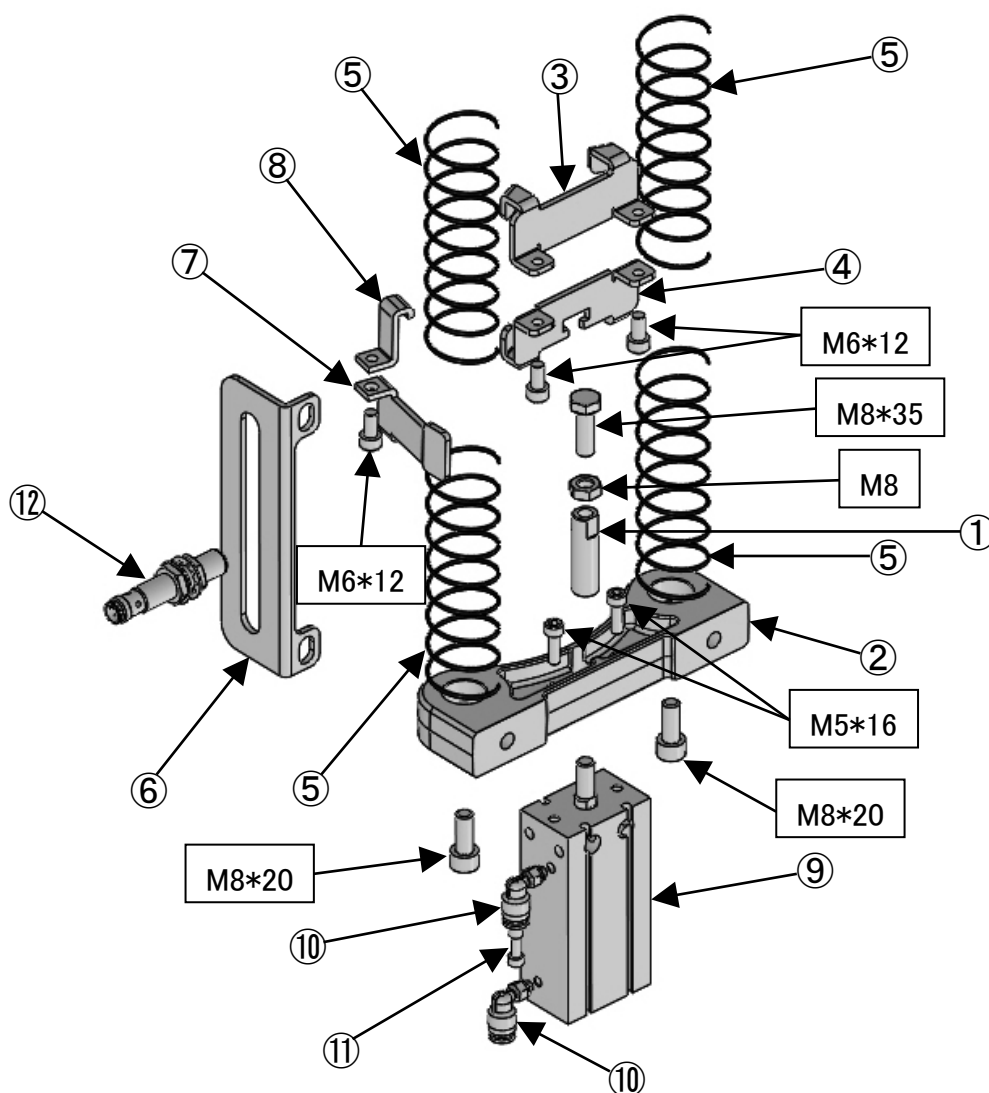


※The floating amount when pushing down becomes less than when pushing up due to the own weight applied to the spring.

※Please be careful that it is impossible to push up the dresser if the air pressure is too low.

## 4. Parts List

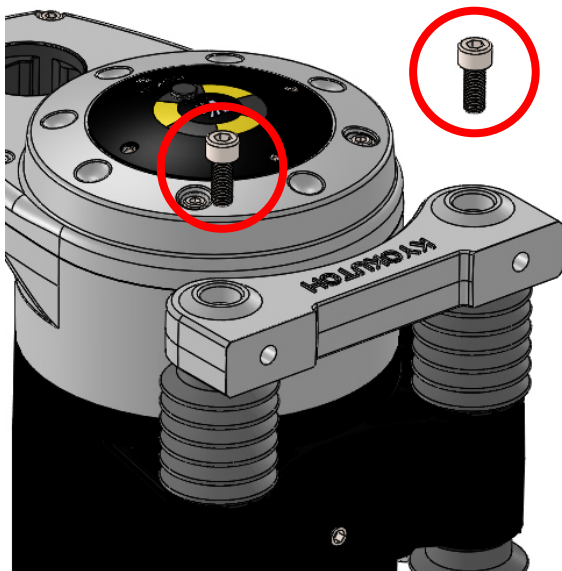
No	Name	Model	QTY	Notes
1	Lift-up shaft	CDK-R-P-004	1	
2	Shaft plate	CDK-R-P-007	1	
3	Flange bracket upper	CDK-R-P-009	1	
4	Flange bracket lower	CDK-R-P-010-2	1	
5	Spring	CD-PA-F-006	4	
6	Sensor bracket	PDW-CDKR-M12-01	1	
7	Side bracket upper	PDW-CDKP-M8-02	1	
8	Side bracket lower	PDW-CDKP-M8-03	1	
9	SMC air cylinder	CDU25-50D	1	
10	Air TAC nipple	ASL6-M5	2	
11	Stop cock	APP6	1	
12	Proximity sensor	-	1	M12 (separately available)



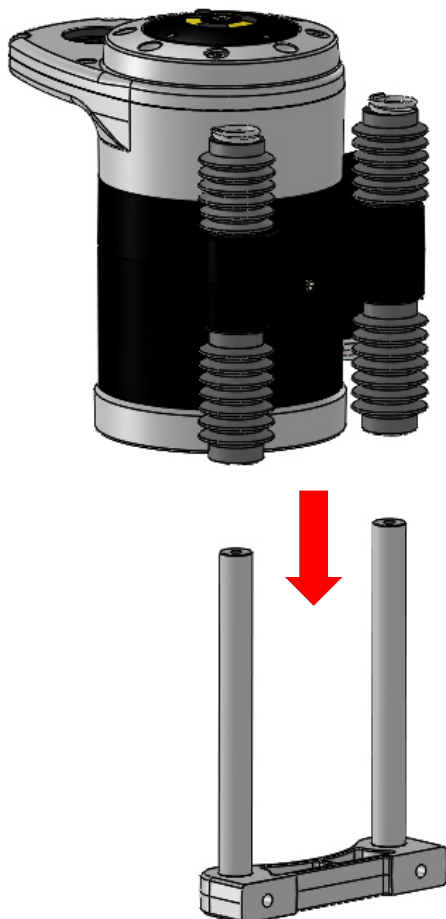
## 5. Method of Disassembly / Reassembly

### ■ Procedure

1. Loosen the M8 cap bolts and remove the shaft plate.  
※The upper shaft plate is to be reused. Be careful not to lose it.

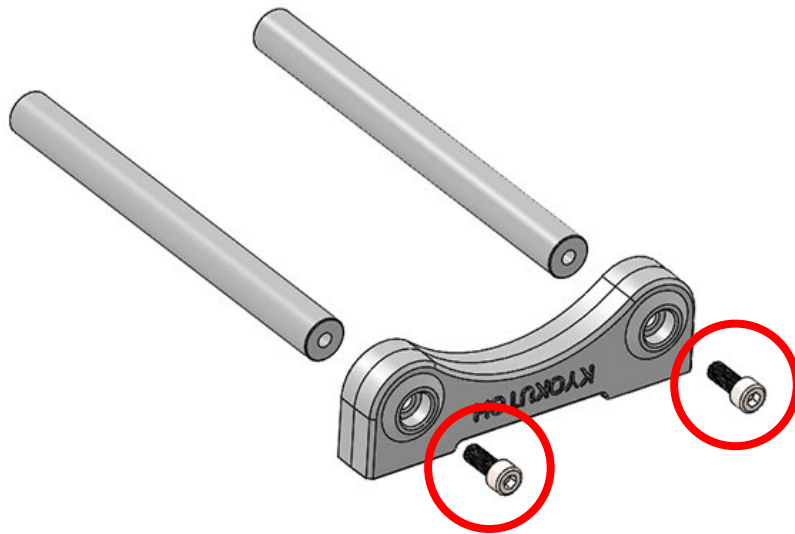


2. Draw out the lower shaft plate together with the shafts.



3. Disassemble the lower shaft plate and the shafts by loosening the M8 cap bolts.

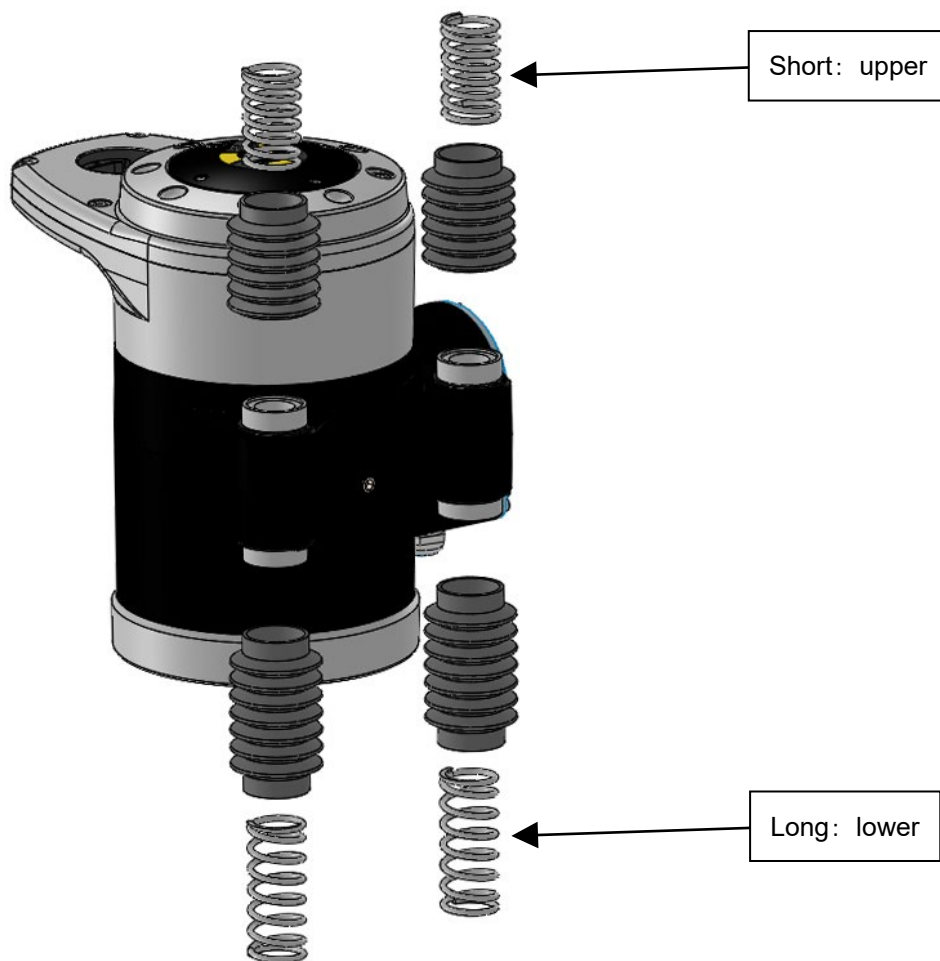
※The shafts are to be reused. Be careful not to lose them.



4. Remove the boots and springs.

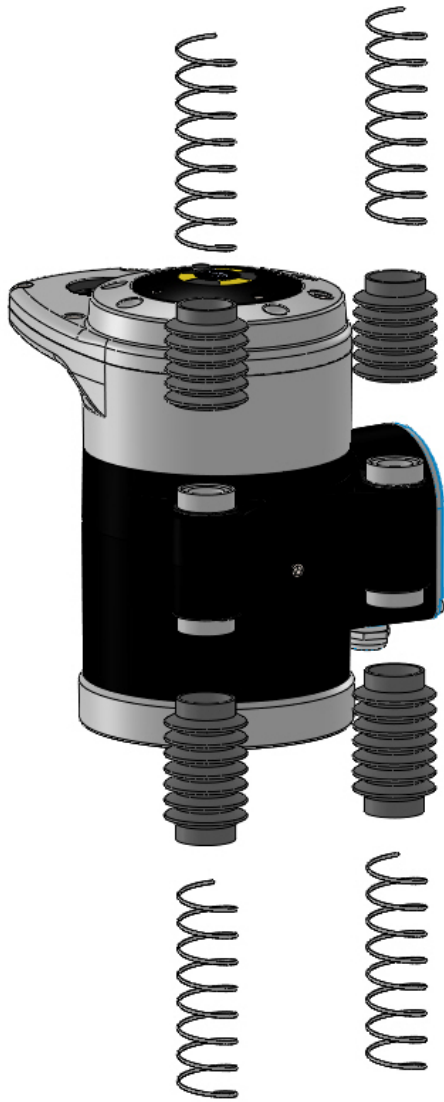
※The boots are to be reused. Be careful not to lose them.

※There are upper and lower removed springs. Be careful when storing them.





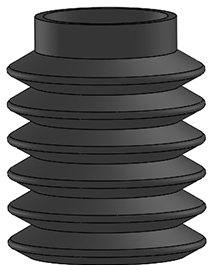
5. Attach new springs.



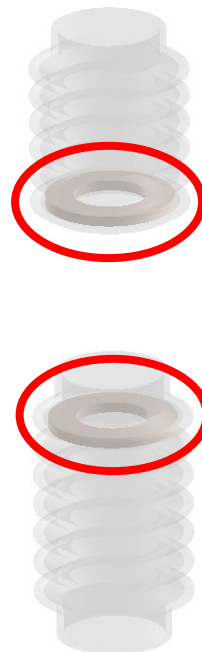
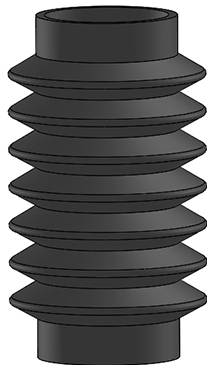
 Caution

※Attach the boots being careful of upper/lower and the washer position.

Shape of the upper



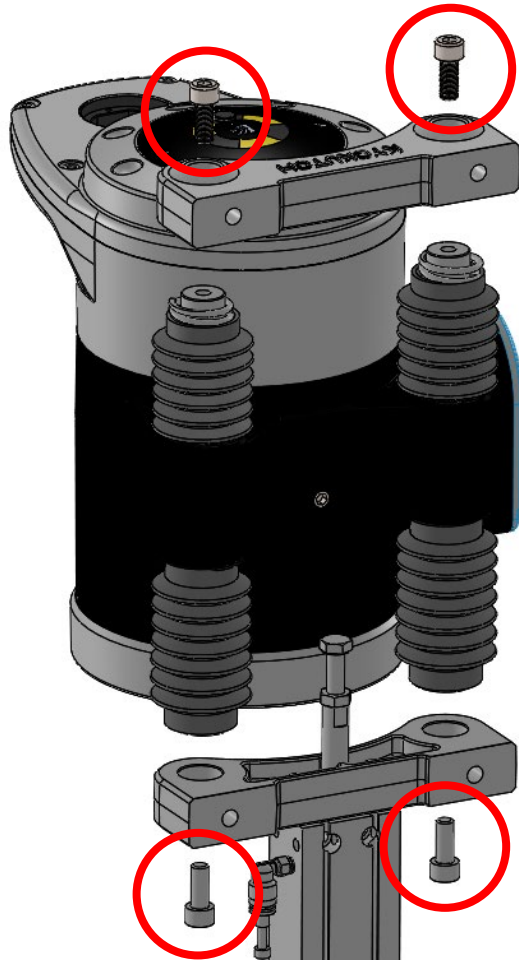
Shape of the lower



Build in the washer so that it contacts the bearing.

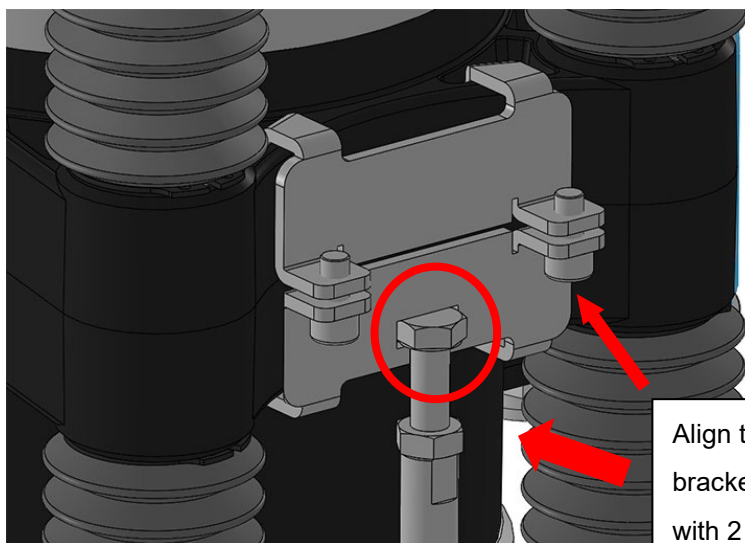
6. Attach the shafts and shaft plates.

※M8 screw tightening torque : 18.5 N • m



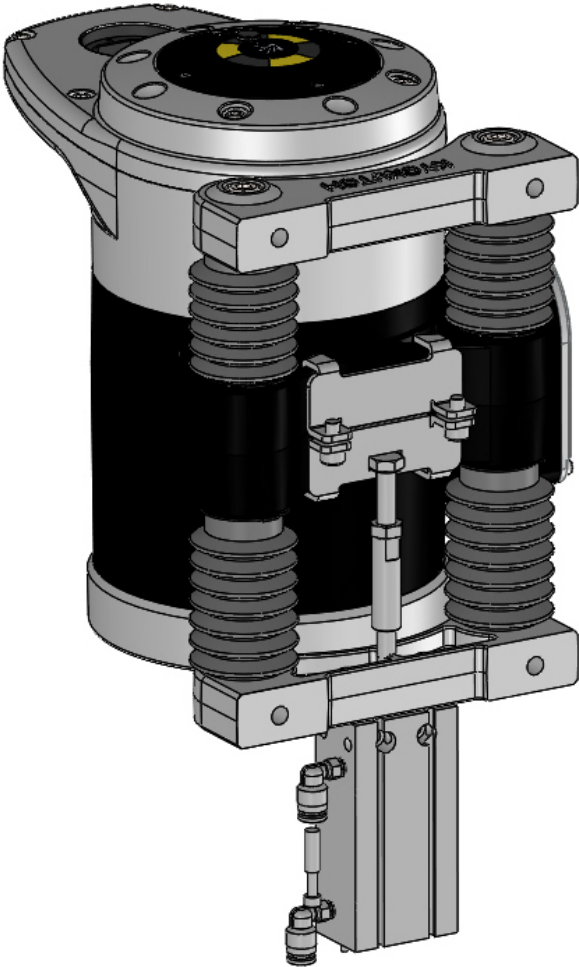
7. Attach the flange brackets.

※If, due to the dresser paint being thick and so on, entry is not smooth, enter forcibly by lightly tapping with a rubber hammer, etc.



Align the bolt head and the flange bracket's notch and then tighten with 2 M6 cap bolts.

8. Complete.



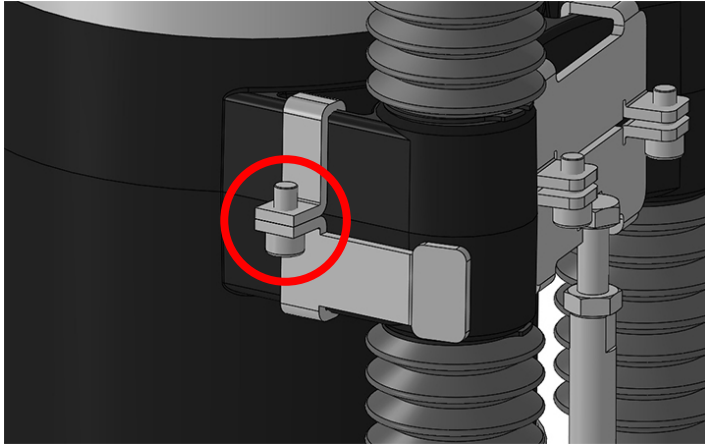
## 6. How to Install the Sensor

※The sensor is to be separately available.

※The sensor bracket contained in the package is of M12 size.

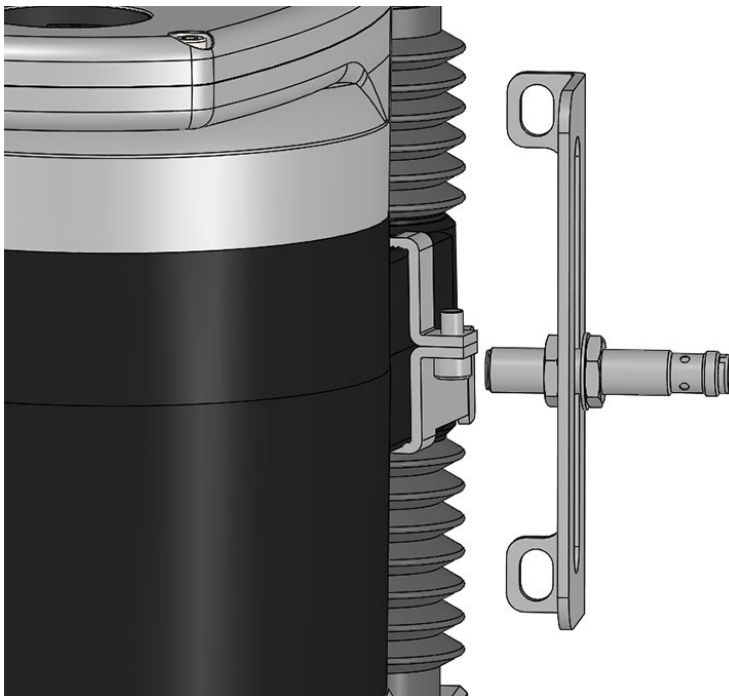
### ■Procedure

1. Attach the side brackets.



2. Attach the sensor to the sensor brackets.

※Install the sensor brackets where they can be fixed firmly.



## 7. Precautions for Operation

### ■Precautions

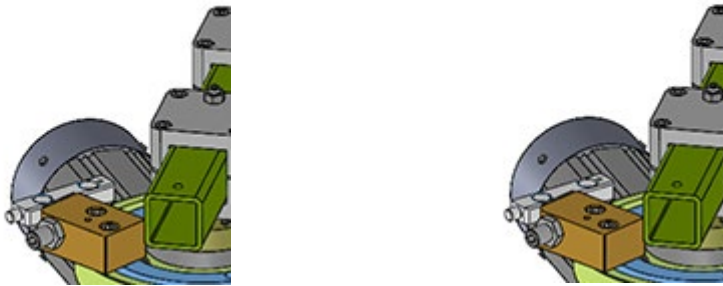
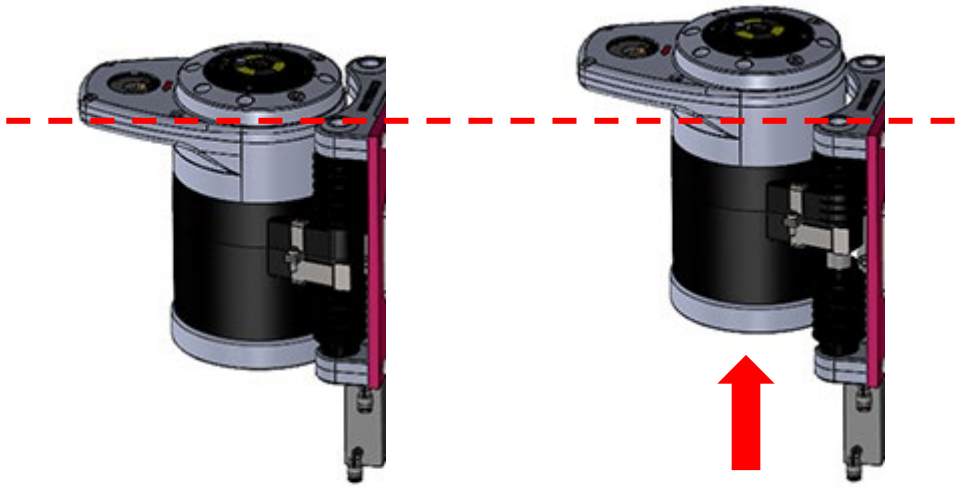
1. Connect an air hose to the cylinder.  
For connection, an air hose of outside diameter  $\phi 6$  should be used.
2. The K-LIFTER should be used in an operating air pressure range of 0.5 ~ 0.7 MPa.
3. Check teaching before the operation.

Please start operating after checking the items above.

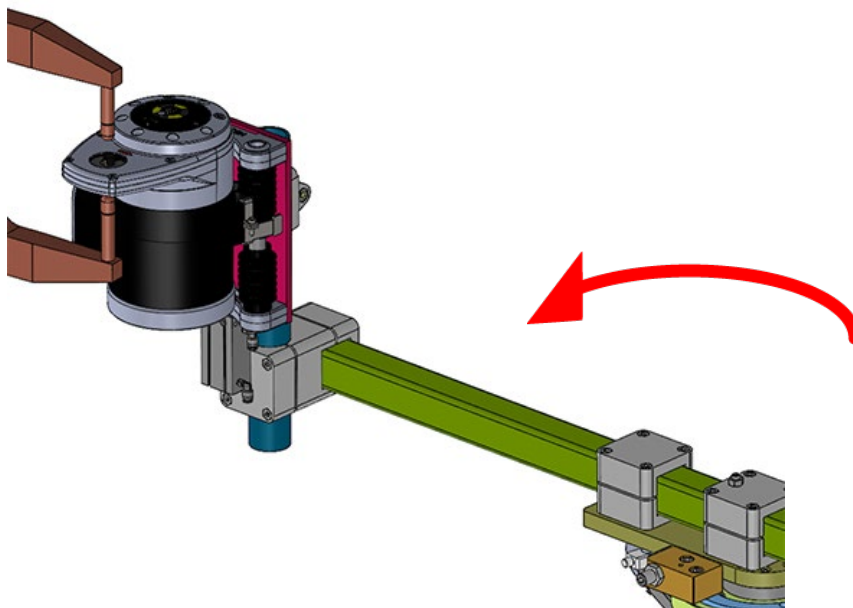
## 8. Example of Teaching

### ■ Example

1. Turn ON the air to lift the dresser.



2. Enter the gun.

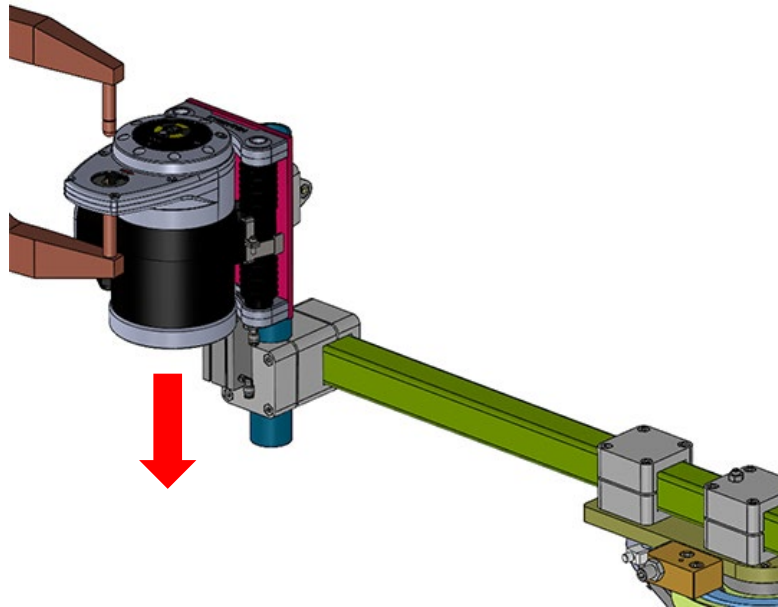


3. Turn OFF the air to lower the dresser down to the grinding position.

※For the dresser to go down, it takes about 2 seconds after turning OFF the air.

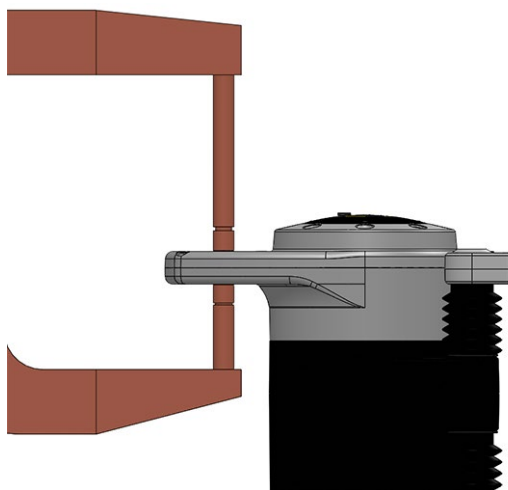
※If the dresser does not go down quickly in about 2 seconds, remove the stop cock and adjust the speed (air volume) using the speed controller.

※The dresser may burst into lifting as soon as the stop cock is removed. Please be careful not to get hurt.



4. Dress the cap tip.

※For the details of how to grind, please refer to the instruction manual of each dresser.



5. After completing grinding, return the K-LIFTER to its original position by reversing the procedure of 1 ~ 3.

## 9. Troubleshooting

### ■Check Items

1. Check the air pressure. (Check that at operation it is in the range of 0.5 ~ 0.7 MPa.)
2. After checking that the air pressure is as recommended, check if the piping connected is one.  
(If the piping is branched, the air pressure may not be enough, in which case sufficient performance cannot be achieved.)
3. Check the air hose for bending.  
(If the air hose is bent at a steep angle, correct performance may not be achieved.)



# Contacts

Contact us if there is any damage or machine defects in our products.



## **KYOKUTOH CO., LTD.**

181-1, Nakayashiki, Orido-cho, Nisshin, Aichi 470-0115 Japan

TEL +81-561-72-8811 FAX +81-561-72-8821

E-Mail: [sales@kyokutoh.com](mailto:sales@kyokutoh.com)

<http://www.kyokutoh.com>

## **SAITAMA Office**

TEL +81-49-277-4324 FAX +81-49-277-4325

## **KANAGAWA Office**

TEL +81-46-204-9260 FAX +81-46-204-9261

## **HIROSHIMA Office**

TEL +81-82-569-6227 FAX +81-82-569-6228

## **FUKUOKA Office**

TEL +81-92-410-6977 FAX +81-92-410-6988

---



## **CHANGER & DRESSER CORPORATION**

1527 ITC Way, Anniston, AL 36207 U.S.A

TEL +1-256-832-4392 FAX +1-256-832-4393

<http://www.changer-dresser.com>

---



## **KYOKUTOH CHINA**

73 Huagang Street, Xiuquan Town, Huadu District,  
GuangZhou City, GuangDong Province, China.

TEL +86-20-86980880 FAX +86-20-86980890

<http://www.kyokutoh.com.cn>

---



## **KYOKUTOH THAILAND**

339/2 Soi Phattanakarn 69, Phattanakarn Road, Prawet,  
Bangkok 10250 THAILAND

TEL +66-272-162-82 FAX +66-272-162-84

<http://www.kyokutoh.co.th>

---



## **KYOKUTOH KOREA**

117, Tawon TAKRA II Industry Center, Dongsan-ro 76,  
Danwon-gu, Ansan-si, Gyeonggi-do, Korea 15434

TEL +82-31-414-8730 FAX +82-31-414-8731

---



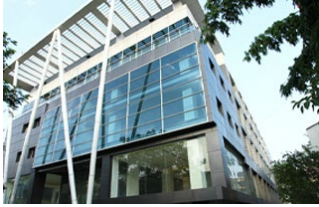
## **KYOKUTOH EUROPE**

Max-Planck-Str.4 59423 Unna Germany

TEL +49-2303-93-615-00 FAX +49-2303-93-615-29

<http://www.kyokutoh.de>

---



**KYOKUTOH WELD INDIA**

Office No.19, 3rd Floor, Aditya Centeegra, FC Road, Deccan,  
Pune - 411004

TEL +91-20-68297011 FAX +91-20-68297011

---